



ACETECH™ is a global manufacturer of vehicle intelligence for your vehicle fleet. Our solutions include cloud-based fleet management software, specialist safety & eco-friendly modules and intelligent electronic control units. **ACETECH™** solutions integrate seamlessly into your vehicles to enhance performance, improve safety and revolutionize the operation of your entire fleet. With over 65,000 solutions installed worldwide, we are the leader of high-tech vehicle systems that provide you the user with unmatched data from your fleet.

ACETECH | Services

Improve Fleet Safety

- Real-time in-cab driver coaching
- Reduce Preventable crashes by 80%
- Expert on-site safety training

Reduce Operational Costs

- Reduce fuel consumption by 10% or more
- Reduce maintenance expenses by 30% or more
- Nearly eliminate critical failures

Powerful Fleet Analytics

- Journey Replay, Fleet Daily Activity & Fleet Utilization
- Fleet Idle & Fuel Consumption
- Fleet Maintenance History and Schedules
- Driver Safety - Speeding, G-Force, Seatbelts, Unsafe Reverse
- Fleet Geofence & Response Time
- Engine Errors, Battery Levels and more

World Leaders

with offices on 5 continents.

Global Brand

with products in 50+ Countries.

Client Oriented

with over 100 Loyal Customers.

Innovation Focused

with over 65,000 products shipped.

Award Winning

dedicated team of professionals.



a multi award winning company

info@acotech.com | www.acotech.com



ACETECH™ is a global leader in the manufacture of Vehicle Intelligence for your vehicle fleet. Our solutions include cloud-based fleet management software, robust safety & eco-friendly modules and intelligent electronic control units. **ACETECH™** Vehicle Intelligence, together with our clients, can lead the charge in revolutionising vehicle fleets with the very latest in vehicle technology and connectivity. Together we can drive down costs and improve efficiencies, no matter where in the world you are based.



ACETECH™ | iNSIGHT LITE

Hardware Specs

ACETECH™ AVI LITE

- Native CAN bus interface to chassis
- Reduced wiring by CAN bus multiplexing
- Telematics enabled

iNSIGHT LITE benefits:

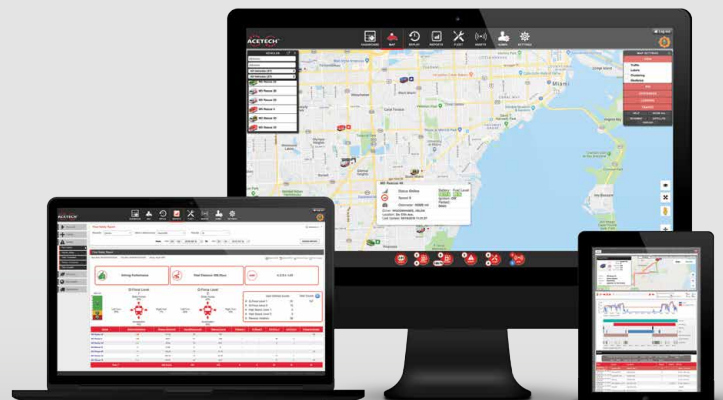
- Standard Vehicle Connectivity
- Low Power Consumption
- Small Component Footprint
- Quick Installation
- Remote Diagnostics
- Predict future fleet requirements



Benefits to the End User

Reduced costs through:

- Reduced weight improves vehicle efficiency
- Improved ROI through long-term reduced operational costs
- Improved all-round technical performance
- Option for Advanced Fleet Analytics
- Option for Advanced Vehicle Tracking
- Other value-add options available in the range, including: ECO-Run, TracSENSE RFID, SOLAR, AVA Driver Assist & more...





ACETECH™ Eco-Run. Drive clean and save green. Engine idling increases expenses of your entire vehicle fleet. **ACETECH™ Eco-Run** is an environmentally friendly module that turns your engine off and on when needed and minimizes unnecessary vehicle idling. It helps reduce costs, promotes better driving behavior and reduces emissions to create a more eco-friendly and cost-effective fleet.

ACETECH | Eco-Run

Reduce Costs

- Reduces fuel consumption costs.
- Minimizes engine wear and tear.
- Reduces maintenance costs.

Smart Idling

- Maintains optimal temperature
- Protects vehicles from theft
- Detailed reporting on rpm, idling, fuel, carbon and cost savings.
- Prevents weak or dead batteries.

Eco Friendly

- Reduces carbon emissions and contributes to a green environment.



Eco Friendly

Stops unnecessary idling and controls fuel consumption.



Customizable

Automatic or manual restart and programmable shutdown.



Decision Making

Web based reports to help monitor fuel efficiency and idling.



Stop

The engine automatically turns off when excessive idling is detected.



Start

The engine restarts when undesirable temp. or voltage thresholds are detected.



Power

Vehicle operation continues to perform when engine is off.





ACETECH™ is a global leader in the manufacture of Vehicle Intelligence for your vehicle fleet. Our solutions include cloud-based fleet management software, robust safety & eco-friendly modules and intelligent electronic control units. **ACETECH™**, together with our clients, can lead the charge in revolutionising vehicle fleets with the very latest in vehicle technology and connectivity. Together we can drive down costs and improve efficiencies, no matter where in the world you are based.



ACETECH™ | CONNECT

Remote Configuration

ACETECH™ CONNECT

- Connected control system with remote diagnostic and configuration

Hardware Specs

ACETECH™ CONTROL

- Native CAN bus interface to chassis
- Reduced wiring by CAN bus multiplexing
- Telematics enabled
- IoT sensors equipped

ACETECH™ CONTROL Benefits:

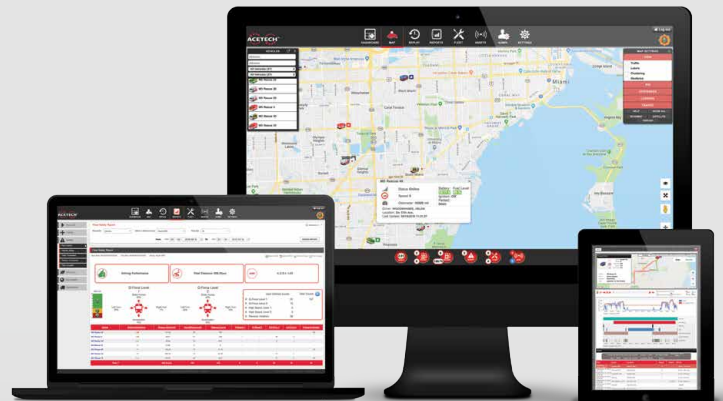
- Full Vehicle Connectivity
- Low Power Consumption
- Small Component Footprint
- Remotely Configurable
- Remote Diagnostics
- Predict Future Fleet Requirements



Benefits to the Modifier

Reduced costs through:

- Reduced cabling by up to 75%
- Fewer terminations result in reduced installation time
- Reduced weight improves vehicle efficiency
- Improved ROI through long-term reduced operational costs
- Improved all-round technical performance
- Option for Advanced Fleet Analytics
- Option for Advanced Vehicle Tracking
- Other value-add options available in the range, including: ECO-Run, Asset Intelligence, SOLAR, AVA Driver Coaching & more...





ACETECH™ is a global leader in the manufacture of Vehicle Intelligence for your vehicle fleet. Our solutions include cloud-based fleet management software, robust safety & eco-friendly modules and intelligent electronic control units. **ACETECH™**, together with our clients, can lead the charge in revolutionising vehicle fleets with the very latest in vehicle technology and connectivity. Together we can drive down costs, improve safety and efficiency, no matter where in the world you are based.



ACETECH™ | CONNECT

Remote Configuration

ACETECH™ CONNECT

- Connected control system with remote diagnostic and configuration

Hardware Specs

ACETECH™ CONNECT

- Native CAN bus interface to chassis
- Reduced wiring by CAN bus multiplexing
- Telematics enabled
- IoT sensors equipped

ACETECH™ CONNECT Benefits:

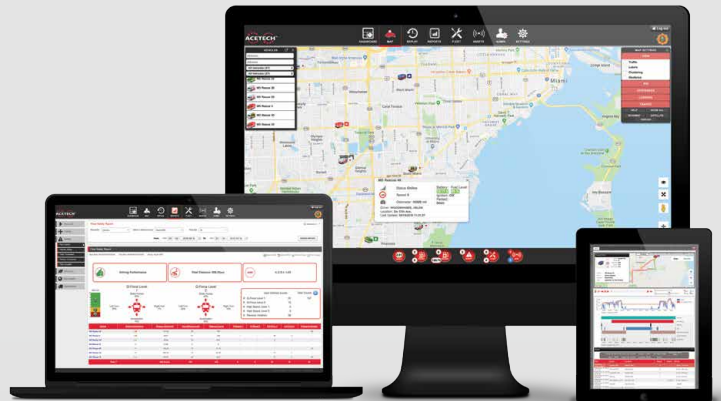
- Full Vehicle Connectivity
- Low Power Consumption
- Small Component Footprint
- Remotely Configurable
- Remote Diagnostics
- Predict future fleet requirements



Benefits to the End User

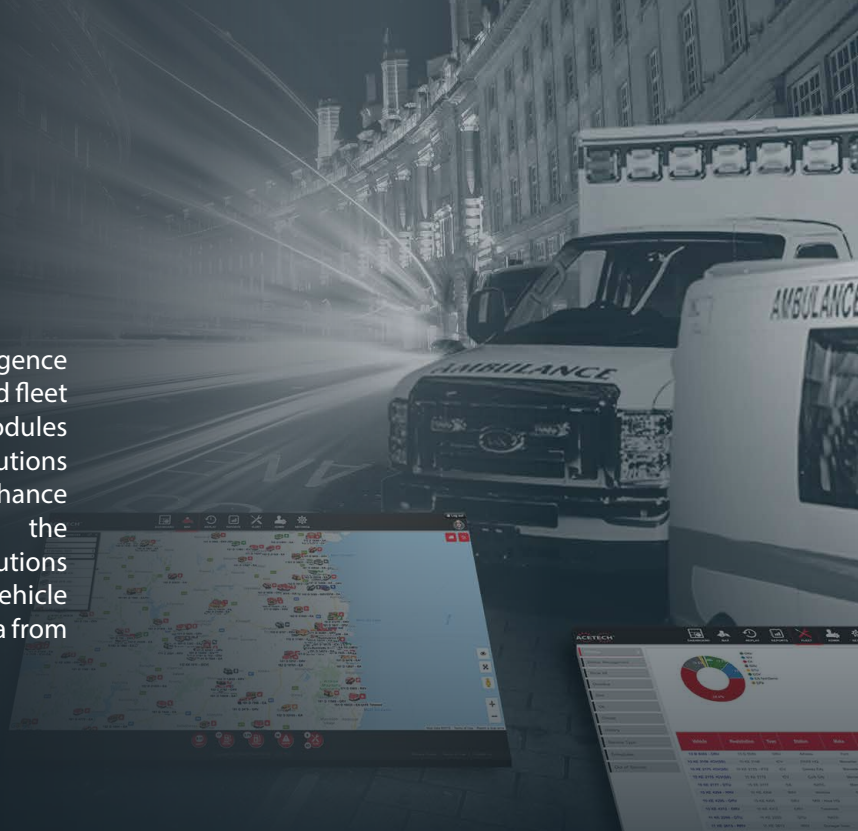
Reduced costs through:

- Reduced weight improves vehicle efficiency
- Improved ROI through long-term reduced operational costs
- Improved all-round technical performance
- Option for Advanced Fleet Analytics
- Option for Advanced Vehicle Tracking
- Other value-add options available in the range, including: ASSET INTELLIGENCE, ECO-Run, SOLAR, AVA Driver Coaching & more...





ACETECH™ is a global manufacturer of Vehicle Intelligence for your vehicle fleet. Our solutions include cloud-based fleet management software, robust safety & eco-friendly modules and intelligent electronic control units. **ACETECH™** solutions integrate seamlessly into your vehicles to enhance performance, improve safety and revolutionize the operation of your entire fleet. With over 65,000 solutions installed worldwide, we are the leader of high-tech vehicle systems that provide you the user with unmatched data from your fleet.



ACETECH™ | Vehicle Intelligence

Fleet Tracking

Always know where your vehicles are located.

- Real-time data provides live mapping of fleet activity.
- Robust reporting suite designed for EMS operations.

Make Smart Decisions

Increase safety and reduce unnecessary expenses.

- Improve fleet and safety performance with powerful data.
- Reduce fuel and maintenance costs.

Performance

Peace of mind knowing your ambulances are operated within policies and guidelines.

- Manage your people and assets to improve operational efficiency.
- Modify driving behavior with real-time alerts and feedback.

Reports

Customized analytics based on your fleet activity. Reports the information you want to see, when and how.



Monitor Vehicle Activity

Reduce aggressive driving by monitoring speeding, G-forces, seatbelt use, unsafe reverse, lights and siren use & more.



Safer Driving

Safe driver coaching with real-time alerts. Drivers are scored and held accountable for unsafe driving.



Location

Live location mapping & vehicle route replay. Take the guesswork out of knowing where your vehicles are and have been.



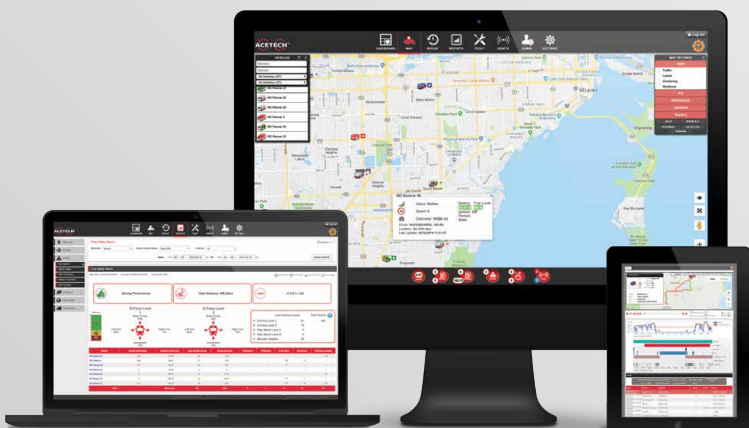
Cut Costs

Reduces fuel consumption & operational downtime. Increase net income by reducing unnecessary expenses.



Maintenance

Realtime vehicle health alerts notify you if your ambulances are approaching critical maintenance failures.



a multi award winning company

info@acotech.com | www.acotech.com



ACETECH™ Vehicle Intelligence, together with our partners, can lead the charge in revolutionising vehicle fleets with the very latest in vehicle technology and connectivity. Together we can drive down costs and improve efficiencies while opening potential recurring revenue streams from the end user. With ACETECH™ Vehicle Intelligence value add-ons there is near limitless potential to benefit your customer through the use of state-of-the-art modules completely configurable to your client’s specific needs.



ACETECH™ | Partnership

Benefits to our Partners

- Improved ROI through long-term reduced operational costs (excellent USP)
- Potential for Advanced Vehicle Tracking
- Potential for Advanced Fleet Analytics
- Real-time in-cab driver coaching
- Improved Driver Safety through AVA add-ons
- Potential for ECO module add-ons
- Predict future fleet requirements
- Improved Brand Equity

POTENTIAL VALUE ADD-ONS

RFID

Manage your equipment and consumables on the road with ACETECH™ TracSENSE.



Eco Friendly

ACETECH™ ECO-Run Module stops unnecessary idling and controls fuel consumption.



Solar

Augment vehicle performance and decrease vehicle off-road with ACETECH™ SOLAR

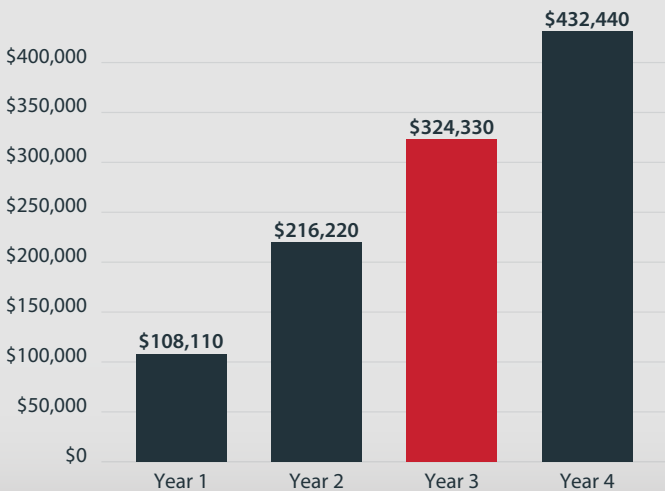


Decision Making

The ACETECH™ AVA Module reduces speeding and encourages better driving behaviour.



USP: HOW TO SAVE UP TO \$320,000 IN 3 YEARS



Return on Investment

Pays for itself in 9 months, representing amazing ROI

	Annual	Year 3
Fuel Savings	\$ 26,250	\$ 78,750
Maintenance Savings	\$ 67,560	\$ 202,680
Preventable Crashes	\$ 14,300	\$ 42,900

Assumptions:

No. of vehicles: 20, Annual fleet miles: 800,000, Fuel per gallon: \$2.98, % MPG increase: 11%, Preventable crash reduction: 80%, Less replacing / repairing of:

Alignment, Engine mounts, Front and rear shocks, Front and rear brake pads, Front brake rotors, Leaf spring bracket, Radius arm bushings, Rear bumpers, Shock mounts, Tires, Transmission service, etc.

Figures stated relate to study undertaken for Gold Cross Ambulance Service, United States, June 2019.



It is vital that EMS Emergency Services Fleets are always powered up. **ACETECH™ SOLAR** provides innovative state-of-the-art solar cells for emergency service vehicles. Solar provides an endless and unlimited source of energy, reducing the need for engine idle or return to base for shoreline power. Light, flexible yet powerful, **ACETECH™ SOLAR** helps you optimize your fleet operations, cut costs and minimize your environmental footprint.



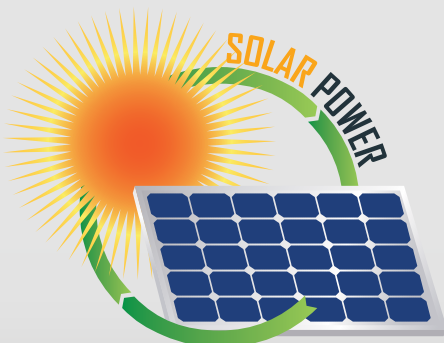
ACETECH | SOLAR

Features

- Lightweight and Flexible Polycrystalline Solar Cells
- High Resistance to Mechanical Stress
- Completely Waterproof
- Ultra-Thin (less than 2mm)
- IEC 61215 and IEC 61730
- Available in various sizes and colours
- Adaptable to any Battery: from 5 to 48 Volt, Lead-acid or Lithium
- Connects with your **ACETECH™ Vehicle Intelligence** Telematics Software

Benefits of ACETECH™ SOLAR

- Reduces engine idling
- Provides fuel savings
- Improves vehicle availability with less need for shoreline connections
- Always-on charging keeps equipment at optimum levels and ready-to-go
- Reduces critical battery replacements
- Reduces Carbon Emissions and contributes to a greener environment



Green Fleet

Reducing idling minimizes emissions, contributing to a green environment.



Integration

Data is fed into **ACETECH™ Vehicle Intelligence** giving detailed fleet information for improved decision making.



Performance

Reduced shoreline charging and optimize fleet battery management.



Innovative Technology

Polycrystalline solar cells give a higher module power and increases energy yield.



Flexible

An ergonomically designed solar panel that is flexible to fit the shape of the vehicle, helping prevent microcracks.



Cut Costs

Lower fuel consumption and battery maintenance costs, creates a more cost-effective fleet.





ACETECH™ Asset Intelligence is a real-time vehicle-based asset tracking and compliance management system aimed at both vehicle crew and fleet managers alike. Lost and stolen equipment cost the industry millions each year.

ACETECH™ Asset Intelligence utilises RFID tags attached to assets, helping to prevent loss and theft of valuable equipment while assisting you with your important asset management, location, maintenance and purchasing decisions.



ACETECH™ | Asset Intelligence

ACETECH Asset Intelligence

- TracSENSE application uses RFID to provide critical real-time feedback on your assets and pre-packs.

In the vehicle

- An RFID tracking system that helps prevent theft to ensure your vehicle is always equipped and compliant.
- Can integrate with **ACETECH™ TOUCH** products and/or Switch Panels to provide missing asset alerts and live asset status.

In the storeroom

- Asset Intelligence is an intelligent inventory management system that helps you order, track and control stock in your warehouse and stockroom.



RFID

Manage your equipment and consumables in your premises and on the road.



Locate

Locate and receive accurate info on all equipment.



Track

Display asset location history and status.



Search

Create a search for specific assets or view full inventory.



Alert

Receive alerts on missing assets and maintenance.



Maintenance

Know the status of asset maintenance and scheduling.





ACETECH™ TOUCH Products provide complete control of what matters in your vehicle with the simple touch of a screen or button. Access navigation maps, journey information, **Asset Intelligence**, passenger data, lighting and HVAC controls and more, all from one unit*.

ACETECH™ TOUCH Products bring together many different high-tech features into one compact design. They work in conjunction with any **ACETECH™ CONTROL** as well as the **ACETECH™ CONNECT** module.



ACETECH™ | TOUCH

ACETECH TOUCH 10 Pro

Display: 10.1" HD Display 1280x720

Dimensions: (WxH) 255mm x 195mm

Operating Volt: 9 - 28V

Operating Temp: -10° to 50°C

Start Up Time: Depends on Windows App (cold boot), >1sec (low power mode)

CPU: Intel Atom Processor, i3, i5, i7

RAM: 2-8GB

Comm: Bluetooth, WiFi, GPS, GSM, RS232, CAN Bus, USB, Video Ub, LAN

VOUT: VGA, DVI, HDMI

O/S: Windows 7/8 32/64 Bit



ACETECH TOUCH 8

Display: 8" Sunlight readable TFT LCD display, 1280 x 800 resolution

Dimensions: (WxHxD) 210mm x 154mm x 33.9mm

Operating Volt: 9 - 30V with 4 pin connector

Operating Temp: -10° to 50°C

Start Up Time: 5sec (cold boot), >1sec (low power mode)

CPU: Rockchip RK3399

RAM: 2 Gb DDR3 / 16GB eMMC

Comm: OBD2/J1939, GPS, RS232, Digital I/O, front facing camera, ambient light sensor, Bluetooth, WiFi, WWAN, digital microphones

VOUT: HDMI

O/S: Android 7.1



ACETECH TOUCH 5

Display: 5" HD AMOLED Display, 1280 x 720 resolution

Dimensions: (WxHxD) 138.2mm x 71.2mm x 16.2mm

Operating Volt: 8 - 28V

Operating Temp: -30° to 70°C

Start Up Time: 5sec (cold boot), >1sec (low power mode)

CPU: ARM Cortex-M4

RAM: 2Gb

Comm: Voice recognition, humidity, temperature, & ambient light sensor

VOUT: Voice announcements / alerts

O/S: ACETECH O/S



*Some product features are model dependent.



ACETECH™ Vision has been developed to improve vehicle safety, efficiency and security. Integrating our camera technology can prevent collisions that arise from blind spots, reduce the risk of false claims while providing additional vehicle surveillance security.

ACETECH™ Vision allows for real-time remote viewing capabilities coupled with our easy to use software providing journey playback and footage downloading options to ensure you are fully covered from the start.



ACETECH™ | Vision

Benefits

Smart Driving

Helps drivers manoeuvre vehicles with more ease, creating a safer journey for your crew and passengers.

Driver Protection

Recorded footage of your fleet that helps in the event of a collision / where claims are made to protect your driver and your reputation.

Anti-theft

The camera system acts as a security surveillance system to deter vandalism and theft.

Insights

View live video feeds and playback previous journey footage of your fleet from anywhere in the world.

Scene Management

Remote login with Live View improves situational awareness and crises management in the event of any incidents with mass casualties.

Features / Technical Specifications

- Remotely View Live Footage, Replay or Download Videos
- Easy to Use Software
- Accessible on Desktop, Tablet or Mobile Device
- Forward and Rear, Side Mounted and In-Cab Camera Options
- Footage: High Definition
- 4 Channel and 8 Channel Options
- Standard 1TB of data or upgrade to 2TB storage.
- Dimensions: 192mm x 184mm x 61 mm
- Voltage: 8-36V

Innovative Technology

Real-time view of on board cameras with high definition video footage.



Safety

Provides additional security for your fleet to deter vandals and improve journey safety.



Security

Reduce costs incurred from false claims and damage to vehicles with accurate video footage.



Boosts Performance

Improves driver experience, simplifies their job and improves driving behaviour.



Situational Awareness

Live View allows for Scene Management and improved Situational Awareness.





The **ACETECH™ CONTROL 20 Pro** is our very latest multiple-signal, CAN bus control unit that incorporates all of the latest, cutting-edge features you require. It seamlessly integrates with other **ACETECH™** products through the **ACETECH™** CAN bus connection and provides the ability to monitor and log PRM, H-bridge, and soft-fusing output currents over time. It can also be easily scaled to continuously provide the most suitable functionality for your application needs.



ACETECH™ | CONTROL 20 Pro

ACETECH™ CONTROL 20 Pro Technical Specs

- 20 total outputs per module
- Up to 5 CONTROL 20 Pro units can be linked together
- Features software-adjustable output polarity
- Designed for automotive operating temperature range
- Capable of 12/24 V applications
- Intuitive and native diagnostics via 3.5" display
- Re-branding option
- 2x CAN bus interfaces (1x ACETECH™, 1x vehicle)
- PWM available on all outputs
- Real-time output voltage/current logging
- Remote updates when coupled with the ACETECH™ CONNECT product
- Can work on its own or part of a larger multimode network
- Small physical footprint: 135 x 103 x 22 mm
- 4 physical inputs fully software-configurable for digital or analogue functions
- Unlimited CAN bus inputs

Benefits to Users

- Gathers and logs performance and warranty-related data
- Modern, flexible, and extremely customizable control system
- Intelligent design for low power consumption
- Input data from CAN allows for reduction in wiring and component size
- Ability to integrate analogue sensors (eg. oxygen, temperature, light, etc.)
- Easy to repair with advanced diagnostics and self-reprogramming
- Small physical footprint and cost-effective design

ECO

Low power consumption for ECO focused fleets



Control System

Fully customizable control system with enhanced configurability



Diagnostics

Advanced diagnostics and self-reprogramming



Sensors

Integrate analogue sensors for monitoring what matters

