



It is vital that EMS Emergency Services Fleets are always powered up. **ACETECH™ SOLAR** provides innovative state-of-the-art solar cells for emergency service vehicles. Solar provides an endless and unlimited source of energy, reducing the need for engine idle or return to base for shoreline power. Light, flexible yet powerful, **ACETECH™ SOLAR** helps you optimize your fleet operations, cut costs and minimize your environmental footprint.



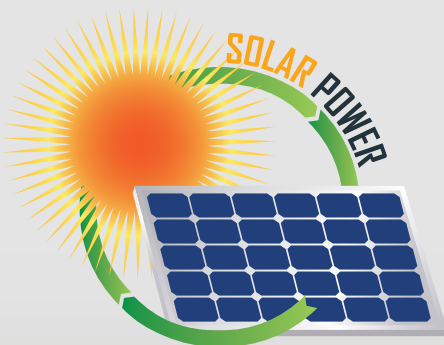
ACETECH | SOLAR

Features

- Lightweight and Flexible Polycrystalline Solar Cells
- High Resistance to Mechanical Stress
- Completely Waterproof
- Ultra-Thin (less than 2mm)
- IEC 61215 and IEC 61730
- Available in various sizes and colours
- Adaptable to any Battery: from 5 to 48 Volt, Lead-acid or Lithium
- Connects with your **ACETECH™ Vehicle Intelligence** Telematics Software

Benefits of ACETECH™ SOLAR

- Reduces engine idling
- Provides fuel savings
- Improves vehicle availability with less need for shoreline connections
- Always-on charging keeps equipment at optimum levels and ready-to-go
- Reduces critical battery replacements
- Reduces Carbon Emissions and contributes to a greener environment



Green Fleet

Reducing idling minimizes emissions, contributing to a green environment.



Integration

Data is fed into **ACETECH™ Vehicle Intelligence** giving detailed fleet information for improved decision making.



Performance

Reduced shoreline charging and optimize fleet battery management.



Innovative Technology

Polycrystalline solar cells give a higher module power and increases energy yield.



Flexible

An ergonomically designed solar panel that is flexible to fit the shape of the vehicle, helping prevent microcracks.



Cut Costs

Lower fuel consumption and battery maintenance costs, creates a more cost-effective fleet.

